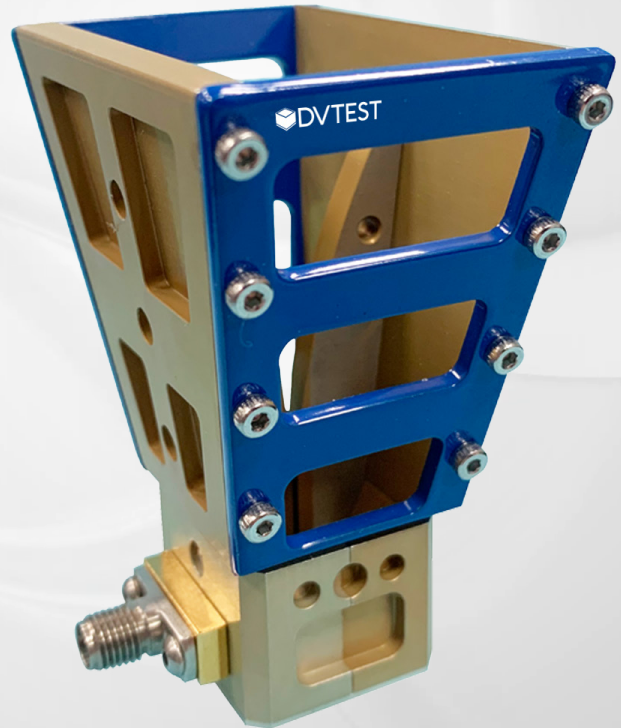


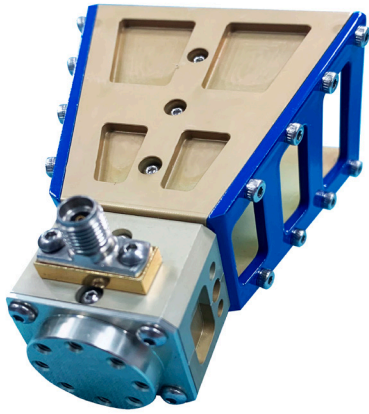
dbDIRECT DRH2 Broadband Antenna



Double Ridged Broadband Waveguide Horn Antenna 18 GHz to 40 GHz

The dbDIRECT DRH2 Broadband Antenna, DVTEST's highest frequency model, featuring high gain, small form factor and directional radiation pattern, is highly attractive for use in test and measurement at higher frequency 5G, mmWave and FR2 applications. This lightweight and compact antenna design provides excellent matching over a broad frequency range: 18 GHz to 40 GHz.

The antenna is designed to be placed in an RF test enclosure such as any of the DVTEST dbSAFE Series models for OTA testing of DUTs. The antennas can be mounted in fixed positions to facilitate repeatable results. When used in conjunction with a rotary positioning mechanism, such as DVTEST positioners, customers can detect the highest point of power sensitivity for enhanced accuracy and repeatability in measurements. In this configuration, both the antennas and DUTs can be positioned in order to facilitate the measurement.



Applications

- 5G FR2, mmWave
- RF wireless device testing in Anechoic chambers where directional and high gain link required with DUT
- Carrier aggregation, MIMO
- Radar
- Spectrum Analysis in DAS environment

Specifications for dbDIRECT DRH1 Broadband Antenna

Frequency Range	18 GHz - 40 GHz
Maximum Input Power	100 W
Maximum Continuous Power	50 W
RF Connector	50Ω K Type (2.92 mm), Female
Polarization	Linear
Dimensions WxDxH Inch (mm)	2.17" (55) x 2.91" (74) x 1.5" (38)
Approximate Weight	150 g
Gain	6 - 23 dBi
Return Loss	S11

Return Loss and VSWR

